

# 2022 Impact Report



**Kansas City Hospice**  
& PALLIATIVE CARE



## A note of thanks from President & CEO, David Wiley

Dear Friends,

Each year, as we prepare our annual Impact Report, I'm amazed by not only the number of individuals and families served, but by the stories of impact the numbers tell. In each of the more than 5,500 families provided with support during serious illness, at the end of life, and while grieving, is an inspiring story of hope, love, and healing. Each of their stories is possible only through your support and your dedication to ensuring everyone in our community has access to the care they need.

**We are proud to  
be local leaders  
in how individuals  
should be cared for  
at the end of life and  
how grieving families  
should be supported.**

As I invite you to share in these stories, I want to extend a heartfelt and sincere thank you for helping to make such a difference in so many lives this past year. Please join us in celebrating the many successes of 2022, which you made possible.

At Kansas City Hospice & Palliative Care, we are proud to be local leaders in how individuals should be cared for at the end of life, and how grieving families should be supported. Together with you, our partners and donors, we ensure the best quality of care for families and adapt to our community's needs with special initiatives that include: an

enhanced focus on Diversity, Equity, Inclusion, Justice & Belonging; achievement of a Level 4 Partnership in the national We Honor Veterans program; continued accreditation by the National Institute of Jewish Hospice; and membership in the National Partnership for Healthcare and Hospice Innovation (NPHI).

Our compassionate team of healthcare and caregiving professionals is dedicated to serving individuals at home and throughout the community. This includes inpatient care at either of our two hospice houses and care wherever families call home - no matter their age, stage in life, or available resources. It also includes comprehensive grief support for families, wherever they are in their journey of loss and healing.

This important work is only possible because of support from our community. I hope you feel proud knowing what a difference you have made in the lives of so many families this year. We are grateful for you, and on behalf of the many people we serve each day, we thank you for your thoughtful and generous support.

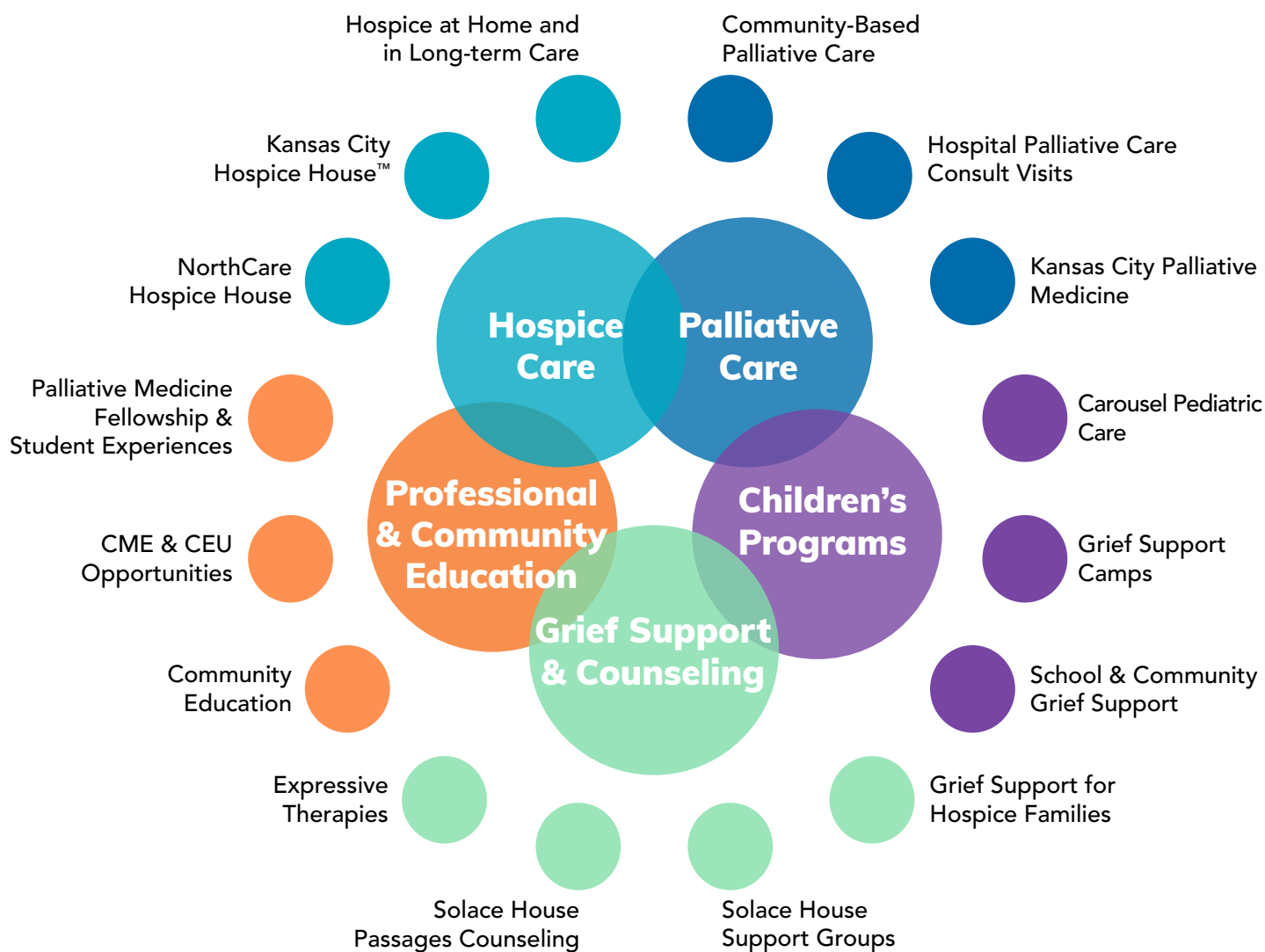
With a grateful heart,



# Kansas City Hospice

& PALLIATIVE CARE

## SCOPE OF SERVICES



Providing care across 12 Kansas City metro counties, at all ages and stages of life and wherever families call home.

Expert Care - Peace of Mind - Comfort - Guidance - Hope

# 2022 BY THE NUMBERS

**702**

people were cared for at  
Kansas City Hospice House™

**634**

people were cared for at  
NorthCare Hospice House

**238**

people were provided with  
general inpatient hospice  
care in a hospital

**1,929**

people received hospice care  
in their home or residence

**217**

people received Community-  
Based Palliative Care to help  
them manage serious illness

**154**

people received Palliative  
Home Health Care

**63**

little ones received Carousel  
pediatric home health and  
hospice care

## Our VISION is clear.

Each person in our  
community is valued from  
life through death and  
each family is supported  
in their grief.







## Our MISSION propels us forward.

To bring expert care, peace of mind, comfort, guidance, and hope to people who are affected by serious illness or by grief.

**\$389,076**

in care was provided to people without the resources to pay

**474**

veterans received specialized care and were honored for their service to our country

**329**

children, men, and women were helped with more than

**\$30,000**

in basic needs assistance such as food, heat, housing, and the holidays

*"I was so impressed with the care I received; the tools provided to me helped get me back on my feet and slowly gain the strength to carry on so I could begin to enjoy life again."*

# On any one DAY...

Nearly **200** referral  
and inquiry phone calls  
are received

**484** people are cared for  
across all programs

More than **3,400** individuals  
are receiving grief support



# And throughout the year...

**5,536** people and their families  
were cared for across all programs

**34,507** visitors came through the doors  
of Kansas City Hospice House™ and  
NorthCare Hospice House

**73,723** in-home and telehealth visits  
were provided across all disciplines

**32,527** phone consultations were provided  
by clinical and grief support staff

**288** trained volunteers contributed more than  
**9,000** hours to support patients and families







**Following the death of a loved one,** family members must cope with their grief and learn how to move forward. Grieving our loved ones never truly ends, but it does change over time. Learning to live with it, it's possible to find hope, peace, and even joy. This is easier to do when surrounded with support, resources, and a community of helpers ready to lift up those who are hurting.

**436** children and adults took part in Grief Support programming through Solace House Center for Grief & Healing

**474** people attended community grief support workshops and **432** people received one-on-one grief support sessions

**Passages Counseling** is a place to turn for adults, children, and families who are experiencing Complicated Grief, who are working through a difficult life transition, or who are coping with various forms of trauma. Caring, licensed mental health professionals are there to explore resources, and be a supportive presence on the path to healing.

**257** adults and children received mental health therapy through Passages Counseling



The end of a person's life is a significant time when they are able to reflect on their life and accomplishments, work through their regrets and challenges, and spend their remaining days with friends and family in comfort and peace.

For families whose loved one is experiencing a serious illness, this precious time is one of life's most meaningful milestones.

Your support ensures ALL in our community receive the care they need, when they need it most. Donors like you ensure everyone has access to the palliative care, hospice, mental health and grief support they need.

On behalf of the many lives touched...

Thank you.



**Kansas City Hospice**  
& PALLIATIVE CARE

KCHospice.org • 816.363.2600